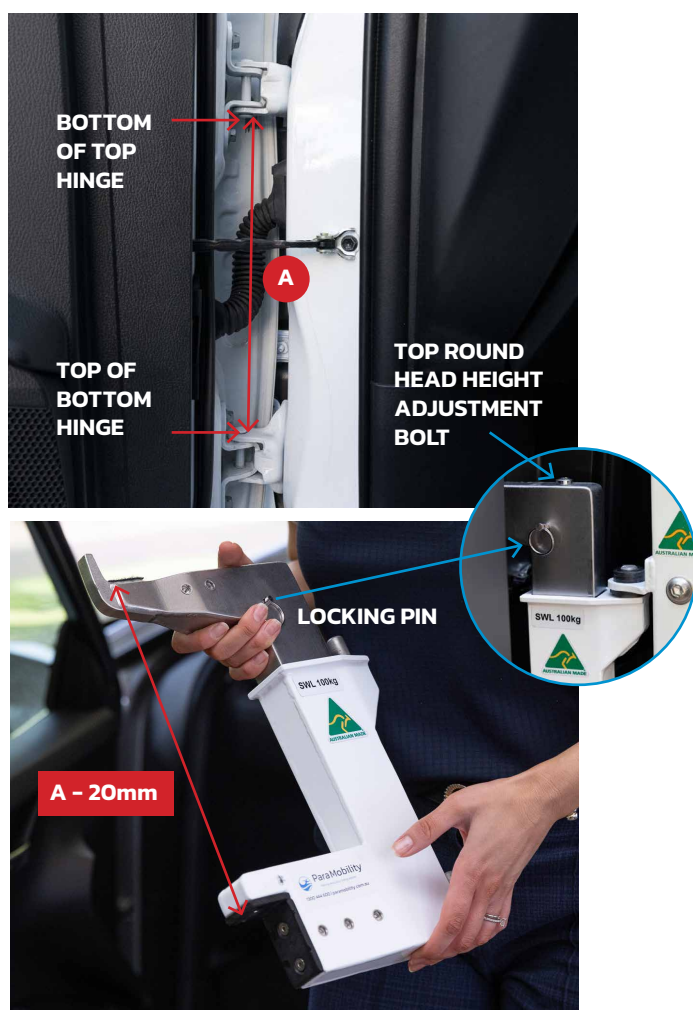


IBIS® Wheelchair to Car Access – Bracket Initial Fitting Instructions



SCAN TO VISIT OUR USER HUB
WITH 3D ANIMATION AND
VIDEO GUIDES

BRACKET INITIAL FITTING STEPS

Once you complete these steps customising the door hinge bracket to suit your vehicle, refer to the User Guide for connecting up the rest of the IBIS parts ready to use.

STEP 1 Measure gap between bottom (underside) of top car door hinge to the top of bottom car door hinge (A).

STEP 2 Remove the locking pin.

STEP 3 Rotate top round head bolt anti-clockwise using Allen key provided so the height is approximately 20mm less than measurement obtained in step 1 (A - 20mm). Tip: It is easier to do most of the lengthening while bracket is on bench.

STEP 4 Insert bracket between car door hinges – ensure bracket rests on the lower car door hinge.

STEP 5 Rotate top round head height adjustment bolt anti-clockwise using supplied Allen key to raise top hook – raise top hook so it fits behind car door top hinge and hook arm contacts the top hinge.

STEP 6 Rotate top round head height adjustment bolt clockwise 3 turns to slightly loosen (enables easier bracket installation).

STEP 7 Re-insert locking pin.

STEP 8 Buffers (supplied) can be used on both the top and bottom of IBIS Car Bracket to stop sideways movement or to protect the car's paintwork (optional). Screw buffer thread directly into desired position of bracket and tighten small nut against bracket to lock in place.

The car bracket is now set, ready to be used.



ParaMobility
Making everyday living easier

Phone 1300 444 600

Delivery, installation + servicing Australia wide
enquiries@paramobility.com.au
www.paramobility.com.au

IBIS®

Wheelchair to Car Access User Guide



IMPORTANT

Ensure you have fitted and adjusted the bracket to your vehicle prior to following these steps. Refer to the **bracket initial fitting instructions** as required.

STEP 1

Open the car door as wide as possible. With two hands, secure the fitted and adjusted bracket hooked around the top hinge and sitting on the bottom hinge of the door. The bracket is now secure in place.



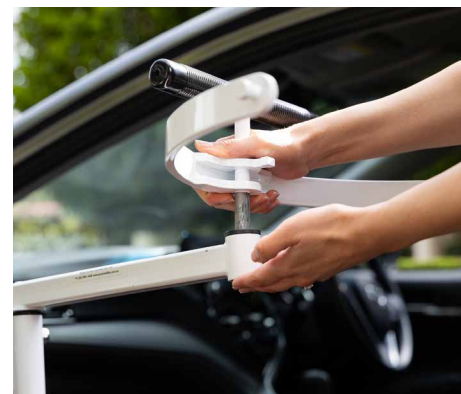
STEP 2

The frame of the IBIS is placed and secured over the two lugs in the bracket.



STEP 3

Once this is secure, place the extension bar into the end of the frame.



STEP 4

Connect the chest bar into the extension bar. Ensure the hoist is secure.



ParaMobility
Making everyday living easier

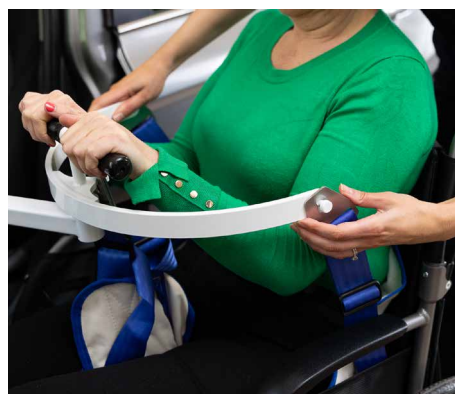
Phone: 1 (800) 929-1484

Shipping Nationwide throughout the US
info@paramobility.com
www.paramobility.com



STEP 5

Plug the power into the car accessory outlet (12v) in the vehicle. Test the power by pressing the remote control to move the hoist up and down.



STEP 6

The sling is placed under the participant on the wheelchair – this can be done before or after the participant sits in the chair. Ensure the straps and buckles are clear from the participant.

Wheel the participant up to the chest bar of the hoist. Ideally the chest bar should be just a bit lower than the chest of the participant to make it easy for the sling straps to be attached. The straps can be adjusted as required however should be as short as possible.

Attach all four buckles of the sling to the chest bar. Once the four straps are secure, check that the participant is comfortable.

STEP 7

Press the lift button on the remote control to lift the participant. Once the required height is greater than the height of the seat, place the participants' feet into the footwell of the vehicle. Using the chest bar and the handle on the rear of the sling, gently turn and guide the participant into the vehicle. Place your hand above the participants head shielding them from the roof of the vehicle to ensure a safe entry. Once the participant is in position over the seat, use the remote control to lower the participant comfortably into the seat.



STEP 8

Once in position, remove the buckles on the sling from the chest bar starting from the far side through the front to the near side.

Gently swing the chest bar around to the outside of the vehicle.

Disassemble each piece in the reverse order to that of assembly.

Place all pieces of the hoist into the carry bag, zip and store in the boot while travelling.





REMOVE PARTICIPANT FROM VEHICLE

STEP 9

To remove the participant from the vehicle, open the car door as wide as possible. With two hands, hooked around the top hinge and sitting on the bottom hinge of the door as previously instructed. The bracket is now secure in place.

STEP 10

Assemble the hoist. The frame of the IBIS is placed and secured over the two lugs in the bracket. Once secure, place the extension bar into the end of the frame then the chest bar into the extension bar. Ensure the hoist is secure.

STEP 11

Plug the power into the car accessory outlet (12v) in the vehicle. Test the power by pressing the remote control to move the hoist up and down.

STEP 12

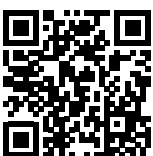
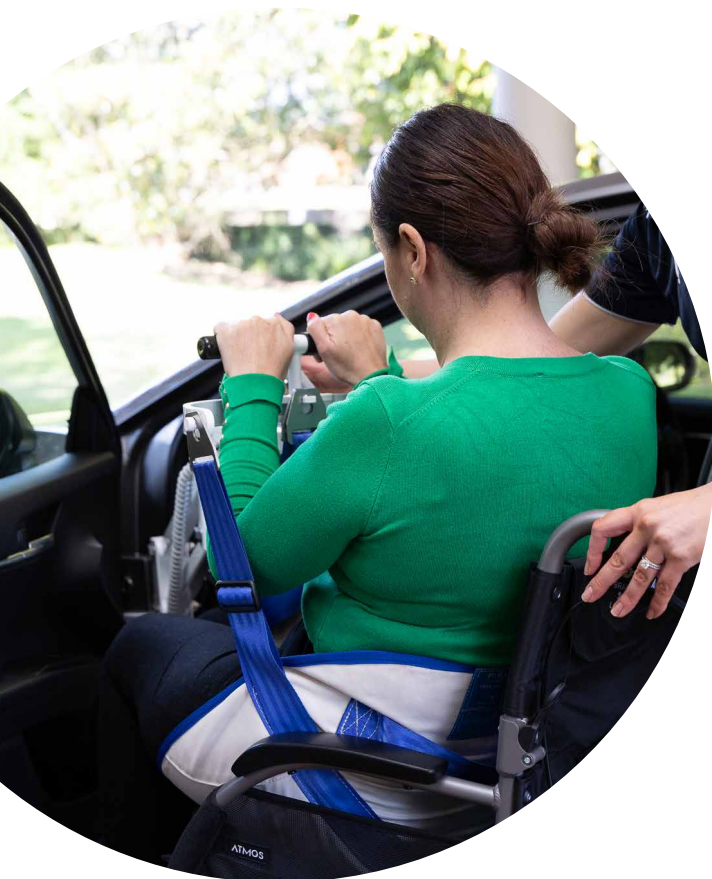
Attach all four buckles of the sling to the chest bar. Once the four straps are secure, check that the participant is comfortable.

STEP 13

Press the button on the remote control to lift the participant so that they will clear the height of the seat. Using the chest bar and the rear handle of the sling to gently turn and guide the participant out of the vehicle backwards with one or both hands, placing your hand above the participant's head shielding from the roof of the vehicle to ensure a safe exit. Lift the participant a little higher and remove their feet from the footwell of the vehicle. Once the participant is in position over the wheelchair, use the remote control to lower the participant into the wheelchair.

STEP 14

Disassemble the hoist, remove the bracket and return parts to the carry bag for storage.



**SCAN TO VISIT OUR USER HUB
WITH 3D ANIMATION AND
VIDEO GUIDES**



ParaMobility

Making everyday living easier

Phone: 1 (800) 929-1484

Shipping Nationwide throughout the US

info@paramobility.com

www.paramobility.com